

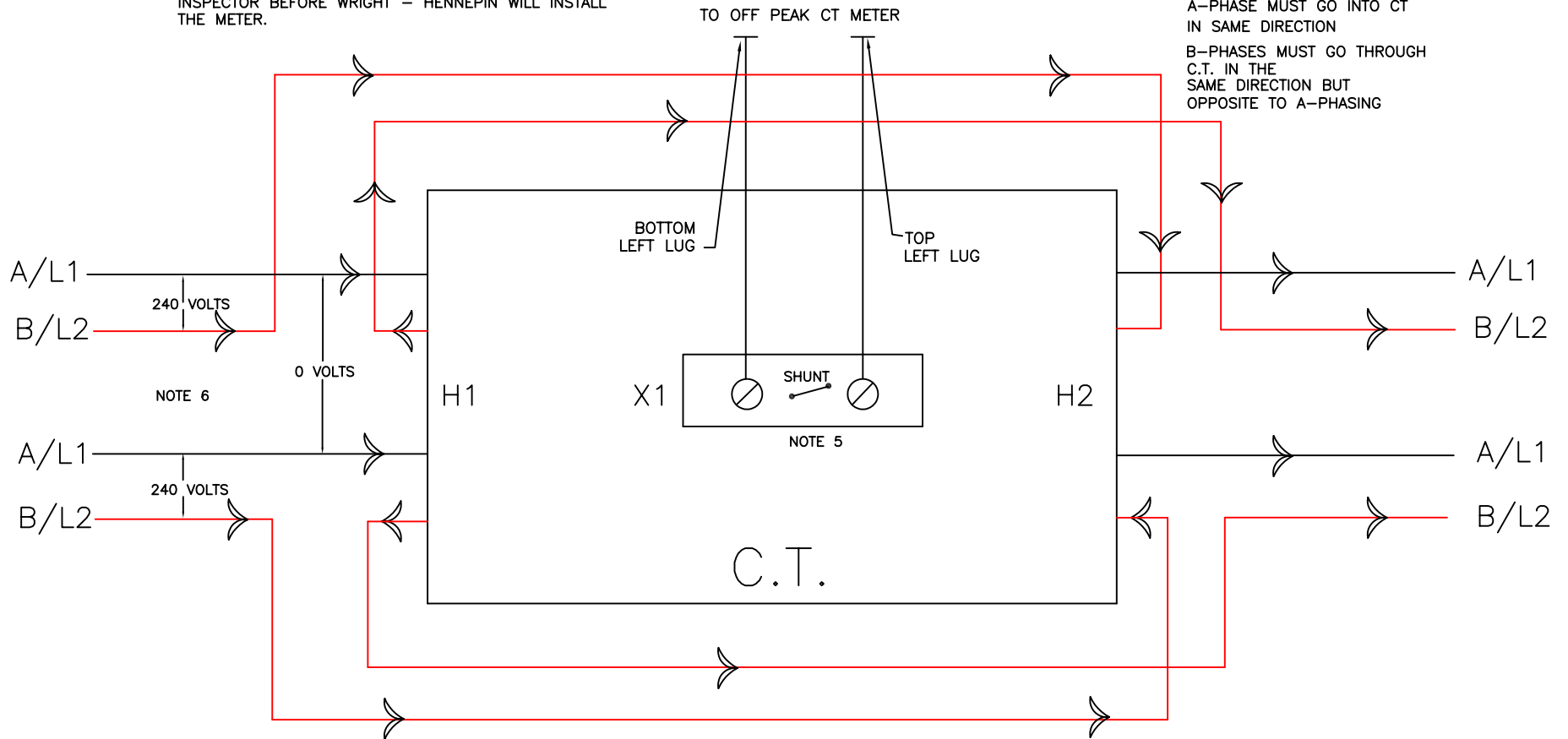
(C.T.) CURRENT TRANSFORMER WIRING

NOTES:

- 1 WRIGHT - HENNEPIN C.E.A. IS NOT RESPONSIBLE OR LIABLE FOR ANY PERSONAL INJURY OR PROPERTY DAMAGE IN THE WIRING OF OR THE OPERATION OF THIS OFF PEAK SYSTEM.
- 2 ALL WIRING MUST MEET N.E.C. (NATIONAL ELECTRIC CODE) AND BE INSPECTED BY A STATE ELECTRICAL INSPECTOR BEFORE WRIGHT - HENNEPIN WILL INSTALL THE METER.
- 3 C.T. MUST BE MOUNTED IN A JUNCTION BOX.
- 4 C.T. MUST BE SHUNTED UNTIL METER IS INSTALLED.
- 5 OPPOSITE PHASES OF ELECTRICAL CIRCUITS MUST GO THROUGH C.T. IN OPPOSITE DIRECTIONS, CHECK PHASING WITH VOLTMETER.

DIRECTIONS:

A-PHASE MUST GO INTO CT IN SAME DIRECTION
 B-PHASES MUST GO THROUGH C.T. IN THE SAME DIRECTION BUT OPPOSITE TO A-PHASING



WRIGHT HENNEPIN COOPERATIVE ELECTRIC ASSOCIATION
 Energy and Services Department
 1-800-943-2667