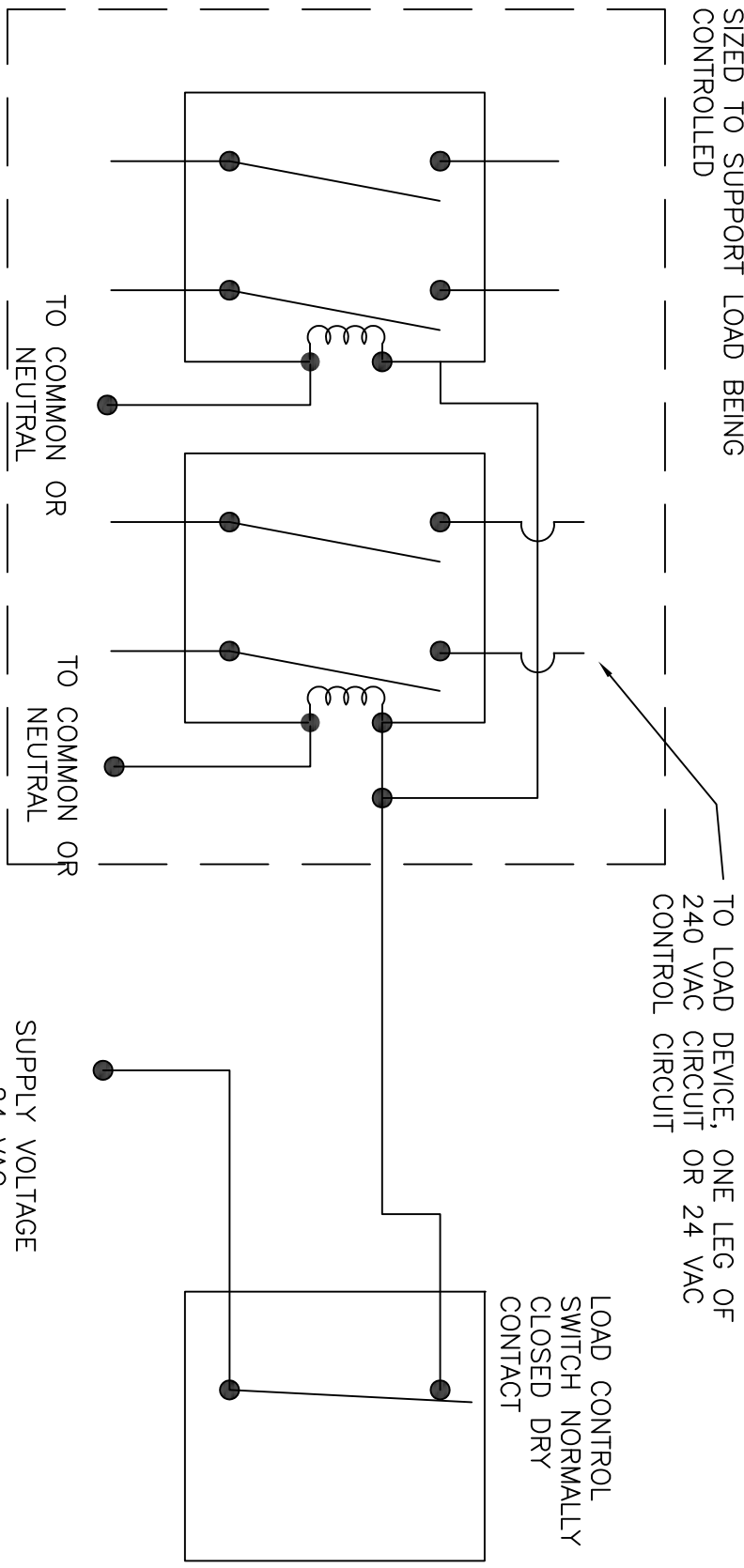


# REMOTE ISOLATION CONTROL RELAY FOR MULTIPLE OFF-PEAK LOADS


CONTACTORS/RELAYS MUST BE SIZED TO SUPPORT LOAD BEING CONTROLLED



COIL VOLTAGE MAY BE 24 VAC, 120 VAC OR 240 VAC.  
RELAYS SHOULD BE PLACED IN TAMPER PROOF BOX FOR WRIGHT HENNEPIN TO SEAL UP.

**NOTES:**

1. WRIGHT HENNEPIN COOPERATIVE ELECTRIC ASSOCIATION IS NOT RESPONSIBLE OR LIABLE FOR ANY PERSONAL INJURY OR PROPERTY DAMAGE IN THE WIRING OF OR THE OPERATION OF THE ENERGY SAVINGS PROGRAM.
2. LOAD CONTROL SWITCH AND METER SOCKET MUST BE MOUNTED OUTSIDE 4' TO 5' OFF THE GROUND.
3. ISOLATION RELAY IS NEEDED IF CONTROLLING MULTIPLE OFF-PEAK LOADS. EXAMPLES INCLUDE: DF BOILERS, DF PLENUM, AC, ASHP, EV'S, LINE VOLTAGE DF HEAT.

 <p><b>Wright-Hennepin</b> Cooperative Electric Association A Touchstone Energy Cooperative</p>		<p><b>WRIGHT-HENNEPIN COOPERATIVE ELECTRIC ASSOCIATION</b></p> <p><b>ENERGY AND SERVICES DEPARTMENT</b> 1-800-943-2667</p> <p><b>REMOTE ISOLATION CONTROL RELAY</b></p>	
DATE	5/6/2024	DWG BY:	TLG
PROJECT NO.		CHKD BY:	
		APPD BY:	LM20
		SCALE	N/A
		SHEET	1 OF 1