

Local students awarded \$25,600 in scholarships

Wright-Hennepin (WH) recently awarded \$25,600 in scholarships to help 20 local students continue their education. Please join us in congratulating them!

WH local school scholarship WH awards one scholarship to each high school in its service area to award to outstanding students pursuing higher education. WH also offers one "at-large" scholarship for students who attend private or neighboring schools. Schools themselves select the winners.

WH has awarded almost \$645,000 in scholarships since 1988. Scholarships are made possible with funding from unclaimed capital credits as well as contributions from diversified businesses under WH Holding.

Edward R. Slebiska Memorial Lineworker Scholarship

The Edward R. Slebiska Scholarship is awarded to up to two individuals planning to become electric lineworkers. WH has awarded \$105,000 through this scholarship since 2003.

Basin Electric Scholarships

Basin Electric Power Cooperative awards a scholarship to a student of a cooperative member and an employee. Basin is one of WH's wholesale power suppliers. Since 2003, Basin has awarded \$25,000.



Madigan Kuser
 Annandale HS
 Local school scholarship



Elisabeth Grack
 Buffalo HS
 Local school scholarship



Grant Grochow
 Dassel-Cokato HS
 Local school scholarship



Joshua McMahan
 Delano HS
 Local school scholarship



Cambria Whiteis
 Heritage Christian Academy
 Local school scholarship



Emma Matheson
 Howard Lake-Waverly-Winsted HS
 Local school scholarship



Katherine Brandt
 Maple Grove HS
 Local school scholarship

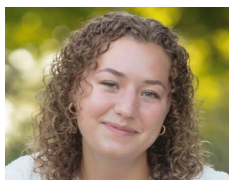


Olivia LaTour
 Maple Lake HS
 Local school scholarship



Caden Peterson
 Monticello HS
 Local school scholarship

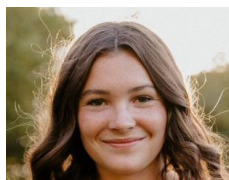
Congrats!



Grace Knooihuizen
 Orono HS
 Local school scholarship



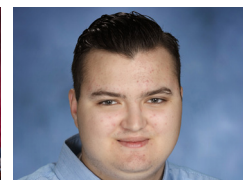
Madelyn Thom
 Osseo HS
 Local school scholarship



Sophia Brun
 Rockford HS
 Local school scholarship



Brianna Good
 Rogers HS
 Local school scholarship



John Marquette
 St. Michael – Albertville HS
 Local school scholarship



Ethan Domjahn
 Watertown – Mayer HS
 Local school scholarship



Harshini Bellamkonda
 Wayzata HS
 Local school scholarship



Sara Brown
 Wright Technical Center
 Local school scholarship



Trenton Evjen
 Dassel-Cokato HS
 Ed Slebiska – Lineworker



Sam Mahr
 Home School
 At Large Scholarship



Lauren Nelson
 Maple Grove HS
 Basin Member scholarship



CEO's Memo

TIM SULLIVAN
WH PRESIDENT AND CEO

Rising energy costs require bill adjustments

“Natural gas hits 13-year high in U.S. on growing supply jitters as demand soars.”

~ Bloomberg News
May 3, 2022

“Natural gas prices have already doubled this year...”

~ CNBC
May 17, 2022

If you’ve filled up your car or paid a home heating bill in the last six months (and all of us have!) you’re no stranger to rapidly escalating energy costs. Prices at the pump have increased statewide from an average of \$2.75 per gallon in April 2021 to \$3.90 in April 2022 according to the U.S. Energy Information Administration (EIA). Similarly, Minnesota’s residential natural gas rates have risen from an average of \$7.29 per thousand cubic feet in February 2021 to \$10.85 in February 2022.

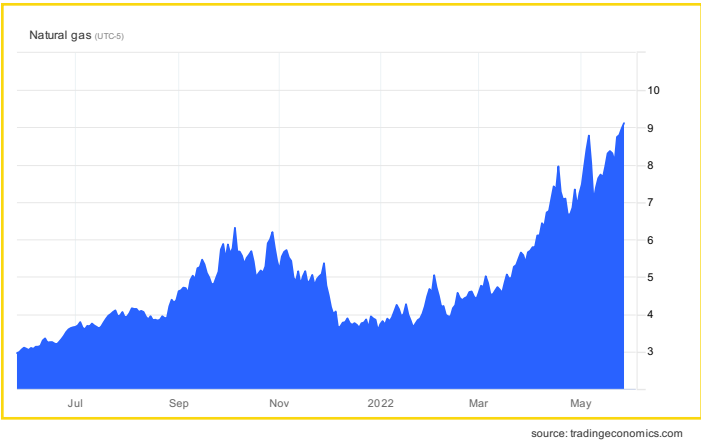
Until just recently, electricity prices were largely immune from these cost pressures. No longer. Natural gas, which is increasingly relied upon to generate electricity, has almost doubled in price over the past year. (See chart at right).

Inevitably, this has an impact on your electric bill. Based on these fuel cost increases, and their anticipated duration through the end of the year, Wright-Hennepin (WH) is compelled to make some mid-year rate adjustments. Consequently, you will see an increase in the Power Cost Adjustment (PCA) portion of your bill. For the average residential consumer (using about 1,000 kilowatt hours (kWh) a month) your bill in 2022 is expected to go from \$137.71 to \$145.14. Based on market conditions, we anticipate these higher PCA charges will extend at least through the balance of year, and perhaps into 2023.

It’s also important to remember that our electric rates will remain extremely competitive. Through the end of the year, we anticipate the average WH residential monthly bill will be nearly 9% lower than those for an Xcel customer. And that’s before you consider the value of capital credits or the discounts available through our energy savings programs.

Because these adjustments are being driven by the cost of power, we anticipate only making changes to the PCA portion of your bill. We have no plans to change our monthly basic charge or our published energy rates for the remainder of 2022.

As a member-owned utility, we recognize that this increase comes at a time when consumers already face higher costs and inflationary pressures across the family budget. Consequently, WH also plans to leverage several million dollars in reserves to cushion consumer bill impacts. These reserves have been built up in better economic times for precisely this purpose – to provide relief when needed.



We also recognize you may be looking for additional support during this challenging time. Please know WH is here to help. We offer a range of tools and programs to help you manage your energy expenses, from budget billing to energy savings programs to online and in-home energy audits. So, please call our Member Service line at (763) 477-3000.

Over the longer-term, WH also remains committed to our overall strategy for managing power supply costs, a strategy which emphasizes diversity of supply and flexibility in resources. This approach has served WH members extremely well, saving you \$38.1 million over the past 5 years alone.

No one likes higher energy bills. But as a member-owned electric cooperative, we will manage through these challenges together. Thank you for your continued support as we continue to provide you and your family with safe, reliable, affordable and increasingly clean energy.

As always, thank you for your business.

Updated rate changes for 2022		
	FROM	TO
Average PCA*	\$0.02081	\$0.02824
Basic charge	\$19.90	\$19.90
Average residential bill	\$137.71	\$145.14
2021 and 2022 Energy Rates	9.8 cents	9.8 cents

*Power Cost Adjustment

We know these changes are less than welcome. But it’s important to remember that WH is a member-owned, not-for-profit electric cooperative. Consequently, we provide energy to you at our cost. Our members are our energy consumers so there is no shareholder on the other side of the transaction.

Operation Round Up spotlight

WH members participating in Operation Round Up (ORU) round up their bill to the nearest dollar, which provides funding to local charities and organizations. So far in 2022, more than \$96,000 has been donated to local organizations, including \$5,000 to the Gillespie Center.

Located in Mound, the Gillespie Center's mission is "Connecting members with the community and each other." The Center has a monthly calendar that is packed with senior and community activities such as exercise, yoga, photography, cards, Men's Shed, gardening, quilting, Wednesday lunch, Country Jam, movies, educational seminars, programs on diverse topics and much more.

“ With this amazing grant we will be able to provide our members with new interactive on site programs, as well as environmental or educational day trips to local attractions. Something we have been unable to do during the last two years. **”**

~ Susan Navratil, Board President
Gillespie Center



Learn more about the Gillespie Center at mnseniorcenters.org/gillespie-center.

ORU funds are awarded to local organizations on a bimonthly basis. Since 1994, WH members have donated more than \$4.6 million this way. Approximately 89% of WH's members participate in the ORU program and contribute a total of approximately \$19,500 each month. View the full list of donations on our website at whe.org.

Summer energy savings with WH programs

AIR SOURCE HEAT PUMP

If you're in the market for an energy efficient home cooling technology, consider an Air Source Heat Pump. They:

- Both heat and cool a home
- Move heat rather than converting it from a fuel
- Work as a standard central air-conditioning unit, cooling the home by moving heat outside
- Enjoy a WH rebate of up to \$900 for qualifying systems plus a Conservation Improvement Program rebate of up to \$630

QUICK CASH WATER STORAGE PROGRAM

- Up to \$1,250 rebate
- \$10 monthly bill credit

METERED WATER STORAGE PROGRAM

- Up to \$500 rebate
- Pay only \$0.06434 per kWh to heat your water

ELECTRIC VEHICLE STORAGE PROGRAM

- Vehicles may charge between 11 p.m. – 7 a.m.
- Energy-saving rate of \$0.06434/kWh
- Rebates available up to \$1,000

ELECTRIC VEHICLE TIME-OF-USE PROGRAM

- Charging is available 24/7
- Up to \$500 rebate. The EV must be all-electric with a minimum of 4.5kW charger rating to qualify
- Energy rates vary based on time of day and location of service
- Energy sold under Time-of-Use will not be subject to the Power Cost Adjustment rider

To learn more about our rebates, call (763) 477-3000 or visit whe.org.



Co-op Connections deal of the month

DAN & JERRY’S GARDEN CENTER
\$5 off any purchase of \$30 or more.

Lost your card? No problem. For a free replacement or to sign up your business, call (763) 477-3000. For more deals, visit www.connections.coop, or use the Co-op Connections app on your mobile device to find all your local deals and more!



WH donates night lights and USBs to local schools

WH recently donated more than 3,600 LED night lights to kindergartners and 3,300 USB plugs to third graders throughout the service territory. WH makes an annual electricity-minded donation to kindergartners and third graders in 40 community schools.

WH donates LED night lights to kindergartners because they are safe and energy efficient. WH began donating USB plugs to third graders in 2021 after being inspired by distance learning and increased technology use by children during the COVID-19 pandemic.



Montrose Elementary kindergartners show off their new nightlights that will help them find their way in the dark.



Otsego Elementary third graders will be able to power up their device for the next road trip.

Cooperative Principles

Cooperatives around the world operate according to the same set of core principles and values, adopted by the International Cooperative Alliance. These principles are a key reason that cooperatives like WH operate differently from other electric utilities. Operating by these principles ensures members needs come first.



Voluntary and Open Membership



Democratic Member Control



Members' Economic Participation



Autonomy and Independence



Education, Training, and Information



Cooperation Among Cooperatives



Concern for Community

Responding to summer storms

Summer in Minnesota means thunderstorms that can quickly grow dangerous. When these storms hit, make sure you're ready for any situation.

STAY INFORMED

Receive outage notifications via text or email by signing up at whe.org.

See the latest outage updates on our outage map (<http://outage.whe.org>) or our social media platforms.

Report outages by calling (763) 477-3100 or online at whe.org.

What are utility franchise fees?

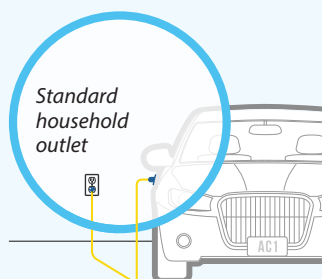
Per state law, a city may impose a franchise fee on a gas or electric utility for use of the public right-of-way by adopting an ordinance that establishes fee terms, including structure, collection, schedule and effective dates. Cities have the sole authority to determine the amount, structure and use of utility franchise fees. Consequently, utilities collect franchise fees on behalf of a city by adding a fee to utility bills. The fees appear on members' bills as a separate line item and can be up to 5% of the average monthly utility amount. WH receives no benefit from collecting franchise fees, absorbs all administrative costs, and distributes them directly back to the city or township that requires them. Several cities in WH's service territory charge a franchise fee. If you have any questions about franchise fees in your area, please consult with your city staff.

CURRENT RESIDENTIAL FRANCHISE FEES PER MONTH

CITY	AMOUNT
Albertville	\$2.50
Monticello	\$1.95
Montrose	\$4.00
Otsego – Effective Oct. 1, 2022	\$4.00
Plymouth	\$2.40
Rogers	\$5.00
St. Michael	\$3.50

KNOW MORE ABOUT

Electric Vehicle chargers



VOLTAGE:
120V 1-Phase AC

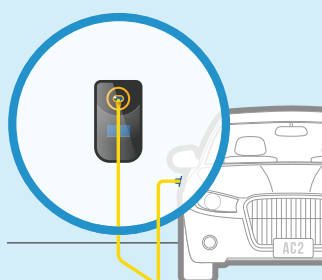
AMPS:
12-16 Amps

CHARGING LOADS:
1.4 to 1.9 kW

VEHICLE CHARGE TIME:
3-5 miles per Hour

AC LEVEL ONE

This type of charge uses a standard household outlet. A full charge could take up to two days. This is not recommended for a permanent charging option but can be used if visiting a residence without an EV charger.



VOLTAGE:
208V or 240V 1-Phase AC

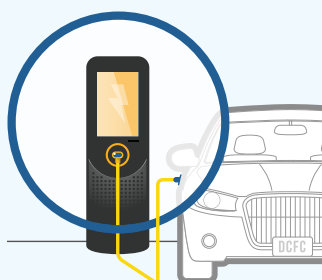
AMPS:
12-80 Amps (typ. 32 Amps)

CHARGING LOADS:
2.5 to 19.2 kW (typ. 6.6kW)

VEHICLE CHARGE TIME:
10-20 miles per Hour
20+ for some EV models

AC LEVEL TWO

Level two chargers are what most EV owners use to charge at home. Level two chargers' typical voltages are 7.7, 10, and 11.5 kW. If you are considering a higher voltage charger, such as a 19.2 kW (80 amp) charger, you'll most likely need to work with your electrician and contact WH. Often, a home's service and circuit panel cannot accommodate this much load. It is a good idea to speak to an electrician when adding an EV charger of any size. WH sells 7.7, 10 and 11.5 kW chargers through the Energy Wise store at energywisemn.com.



VOLTAGE:
208V or 480V 3-Phase AC

AMPS:
<100 Amps

CHARGING LOADS:
50-350 kW

VEHICLE CHARGE TIME:
60-80 miles in 20 Minutes

DC LEVEL THREE – FAST CHARGER

These are commercial chargers and typically are seen at businesses and fuel stations. WH has two DC Fast Chargers at our headquarters in Rockford and the Albertville Outlet Mall.

Protect what matters most.

Home security monitoring

Feel good about being part of the cooperative difference by choosing us for your home or business security needs. WH Security takes the guesswork out of putting together a home security system that works the way you need it to. Save \$3 every month on 24/7 monitoring – just for being a member of the cooperative!

Call us to discuss how we can customize a security package specifically for you.

WH members **save**

\$3⁰⁰ month



EXPERIENCED AND LOCAL PROVIDER

We've been protecting our Minnesota friends and neighbors for more than 30 years.

WHSECURITY
Trusted. Local.

763.477.3664 • wh-security.com



Quick fix. Fast service. Fair price.

WH Appliance Repair plan helps you with unexpected repair bills. The plan includes **your choice** of 5 appliances.*

Popular options include:

- ✓ Refrigerator
- ✓ Clothes Dryer
- ✓ Furnace
- ✓ Range
- ✓ Water Heater

Packages Start At

\$18⁷⁵ month

*Additional appliance coverage is also available. No deductible or trip charge. Certain restrictions apply.

(763) 477-3000 • whe.org/services-products.html

WH Appliance
Repair

Trimmed trees are safe trees



Safely have your trees trimmed by our expert tree care specialists. Schedule your service today!

Services include:

- Pruning and shaping
- Tree removal
- Emerald ash borer treatment
- Aerial bucket truck work
- Storm damage clearing

90-DAY
no-interest
financing available!



(763) 477-3000
whe.org

Solar Winners

tenKsolar Winner



ARVIN BORGMANN of Rogers wins a credit for 135 kWh, April's output from WH's tenKsolar panel array.

JAMES KLEIN of Maple Grove wins a credit for 112 kWh, May's output from WH's tenKsolar panel array.

Solar Winner



VERNA HILLSTROM of Maple Grove wins a credit for 234 kWh, April's output from WH's solar panels.

BENJAMIN WOOD of Elk River wins a credit for 187 kWh, May's output from WH's solar panels.

Learn more at <http://bit.ly/2re3mGN>

Board Report: Meeting highlights

MARCH BOARD MEETING

The Wright-Hennepin and Wright-Hennepin Holding Company (WH Holding) monthly Board of Director meetings were conducted March 21, 2022. A quorum of directors was present. Items discussed or Board action taken:

- Accepted auditor's report on an unqualified ("clean") opinion for fiscal year 2021.
- Approved updated Schedule of Charges.
- Approved rescheduling the May Board Meeting.
- Approved donation to the Wright County 4H.
- Selected directors to attend the National Rural Electric Association's Legislative Conference and Minnesota Rural Electric Association's Fall Washington D.C. Visit.
- Selected directors to attend the Wright County Dairy Princess Luncheon.
- Selected directors to attend area school scholarship banquets.
- Heard the annual safety report.
- Heard update on the Advanced Metering Infrastructure (AMI) and Demand Management Receiver (DMR) exchange projects.
- Directors reported on industry meetings they attended on behalf of the cooperative.
- Reviewed and filed the monthly CEO, legal, financial, and operations reports.

APRIL BOARD MEETING

The Wright-Hennepin and Wright-Hennepin Holding Company (WH Holding) monthly Board of Director meetings were conducted virtually April 12, 2022. A quorum of directors was present. Items discussed or Board action taken:

- The Board shared recollections and took a moment of silence in remembrance of former CEO David Larson.

- Per the CORP-20 Capital Credit Policy, "there shall be no special retirement of capital credits in excess of \$25,000 per member unless Board approved." Board approved the special retirement of capital credits at a discount for a member leaving WH's lines.
- Approved a new Station Service Power Supply Agreement.
- Approved renewal of WH's line of credit to WH Holding.
- Heard how the Member Directed Resources savings are calculated.
- Heard key financial information to be presented at the annual meeting.
- Heard a detailed report on retaining the ZEF Energy investment in WH or moving it to WH Holding.
- Heard a report on commercial and residential developments in WH's service area.
- Heard an overview of WH Appliance Repair.
- Heard an overview of WH and WH Generation's process of fuel purchasing.
- Directors shared highlights of meetings attended on behalf of the cooperative.
- Reviewed and filed CEO, financial, and other reports.

APRIL REORGANIZATIONAL MEETING

The Wright-Hennepin and Wright-Hennepin Holding Company (WH Holding) Board of Director Reorganizational Meetings were conducted following the Annual Meeting on April 21, 2022. A quorum of directors was present. Items discussed or Board action taken:

- Welcomed newly elected director Mark Skinner of Maple Grove – District 8.
- Approved the election of officers:
 - » WH Electric: Erick Heinz, District 9 as Chairman, Timothy Young, District 1 as Vice-Chairman and

Keep in touch with your cooperative!

Member call center:

(763) 477-3000 or (800) 943-2667
Hours: 7:30 a.m. – 5 p.m.
Monday – Friday

To report an outage:

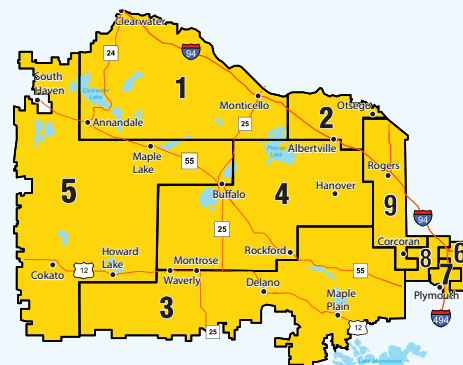
Dispatchers are available 24/7
Call: (763) 477-3100 or (888) 399-1845

WH Security monitoring:

Security dispatchers are available 24/7
Call: (763) 477-4275 or (800) 858-7811

Website: whe.org

Email: info@whe.org



Board of Directors:

District 1: Timothy Young, Annandale
District 2: "Butch" Lindenfelser, Monticello
District 3: Pat Bakeberg, Waverly
District 4: John Reynolds, Buffalo
District 5: Chris Lantto, Annandale
District 6: Mike Tieva, Maple Grove
District 7: Kenneth Hiebel, Plymouth
District 8: Mark Skinner, Maple Grove
District 9: Erick Heinz, Corcoran

WH President and CEO: Tim Sullivan

WH CFO: Brian Swanson

WH Holding COO: Wendy Youngren

This cooperative is an equal opportunity provider and employer.

Michael Tieva, District 6 as Board Secretary Treasurer.

- » WH Holding: Timothy Young, District 1 as Chairman, Michael Tieva, District 6 as Vice-Chairman and Duane "Butch" Lindenfelser, District 2 as Board Secretary Treasurer.
- Approved the reappointment of the Operation Round Up Directors Brenda Moy – District 4, Travis Thiess - District 6 and Tami Odenthal – District 8 as directors.

6800 Electric Drive
Rockford, MN 55373

Hotline Update

JUNE NEWS FOR WRIGHT-HENNEPIN MEMBERS



Digging into an Outdoor Project?

Before you dig, dial 811 or visit www.call811.com to protect underground utilities. Careless digging poses a threat to people, pipelines and underground facilities. Contact 811 first and help keep our community safe.

Look for WH at summer events!

July 4

Annandale Parade
10 a.m. start

Delano Parade
10:30 a.m. start

July 14-16

Maple Grove Days
• Big Truck Show
• Parade
• Business Expo

July 20-24

Wright County Fair
• Booth
• Major evening events sponsor

August 2

Maple Grove National Night Out
11 a.m. start

August 14

Rockford River Days Parade
12 p.m. start