

TREE CLEARING AND SPRAYING

OBJECTIVE

To establish a policy to maintain the right-of-way along the Cooperative distribution lines.

I. Availability

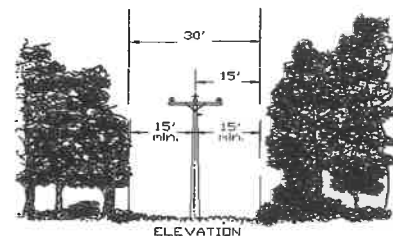
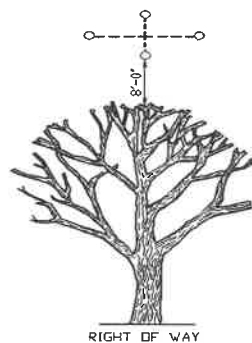
This policy applies to all members.

II. Conditions

- A. The Cooperative shall have the right to access the member's property at reasonable times to cut, trim, inspect, and control the growth of trees, shrubbery, undergrowth, roots or any other vegetation in the Cooperative's right-of-way or easement corridor that may interfere with or endanger the operation and maintenance of the Cooperative's facilities or systems. The Cooperative shall have the right to cut down any dead, weak and leaning trees that are tall enough to strike the line or damage the Cooperative facilities in falling.
- B. The Cooperative will attempt to provide reasonable advance notice (i.e., five (5) business days) to members of cutting and spraying activity through the Cooperative newsletter, by a postcard mailing, or by phone.
- C. The Cooperative will strive to trim or remove trees that may interfere with or endanger the safe operation of the Cooperative's facilities or system as follows:
 1. Remove all trees within fifteen feet of the pole line (center conductor).
 2. Cut trees at ground level whenever possible.
 3. Trim trees to at least ten feet away from any energized conductor and eight (8) feet from neutral when removal is not possible.

(C-3)

Normal R.O.W. – (C-1) & (C-2)



WH.
Wright-Hennepin
Cooperative Electric Association
A Touchstone Energy® Cooperative

If the member requests an alternative to trimming, the following guidelines will apply, provided it is feasible and does not compromise the quality or the reliability of the lines.

1. The member may have the overhead line converted to underground, provided members pay the costs and expenses associated with such work.*
2. The member may have the overhead line relocated to another area where trees will not cause foreseeable interference with the operation of the line, provided they agree to pay the charges for such work.*
3. The member may allow the Cooperative to cut down the danger or hazard tree(s).
4. If feasible, the member may agree to allow the Cooperative to relocate the danger or hazard tree(s) using a tree spade, at the member's expense.*

* A credit equal to the cost of one tree trimming on the member's property within the right-of-way may be applied to the member's account with the Operations Director approval.

D. The Cooperative will treat the right-of-way with EPA approved herbicides to prevent growth of new trees. If the member requests an alternative to the spraying, the following guidelines will apply, provided it is feasible and does not compromise the quality or reliability of the lines.

1. Relocate wires at member's expense **
2. Convert to underground at member's expense **
3. Relocate trees or shrubs at member's expense **
4. Brush mowing and treat stubble (WH expense)

** A credit equal to the cost of one spray application on the member's property within the right-of-way may be applied to the member's account with the Operations Director approval.




- E. Upon request from a member, the Cooperative may remove danger trees or hazard trees along main feeder lines, and members shall be responsible for all cleanup associated therewith. In the event a member hires a third-party contractor to remove vegetation near Cooperative facilities, the member shall notify the Cooperative in advance, and the Cooperative may drop lines for safety purposes. Except in extraordinary circumstances, lines will not be dropped on weekends. In all other circumstances, the Cooperative requires at least two (2) business days' notice prior to dropping lines for vegetation management purposes.
- F. If members within the Cooperative service territory request the removal of trees outside of the easement corridor or right-of-way on the member's property, the following guidelines will apply:
1. The Cooperative may provide a quotation to do the work.
 2. If accepted, the Cooperative will schedule the work with the member.
 3. Member will enter into a written agreement with the Cooperative whereby the member agrees to hold the Cooperative harmless, indemnify, and release the Cooperative from all claims associated with the removal of such trees.

III. Responsibility

Operations Director

Effective: 08/17/2024 Supersedes: CORP-90, dated 03/08/2019

Approved: 08/16/2024


Michael Tieva, Secretary